

Centrifuges



GERBER
INSTRUMENTS
Since 1892 

Gerber Centrifuges

Gerber Instruments, since its founding in 1892, has developed and produced analytical devices and instruments for quality control in the dairy industry.

For the determination of fat and fat extraction, centrifuges are the basic equipment in every laboratory.

With our established Gerber centrifuges Universal and Micro II these methods can be carried out:

- Fat determination according to Gerber
- Fat extraction according to Roese-Gottlieb and Mojonnier
- Solubility determination according to Gerber and ADPI

The Gerber centrifuges with high safety standards and reliability.

Product features:

- Strong sheet steel housing with an acid-resistant paint work
- Cover lock to prevent opening of the centrifuge during operation
- Unbalance shut-off through uneven filling or sudden glass break
- Motor with elastic bearing for smooth run

Centrifuge Gerber Micro II

Small centrifuge for the determination of fat in milk and dairy products and solubility of milk powder according to Gerber.



Specifications:

Control	Microprocessor control
Timer	0 - 60 minutes
Power	115/230 VAC
Frequency	60/50 Hz
Heating (optional)	600 W adjustable up to 65 °C
Dimensions (WxDxH)	430 x 460 x 280 mm
Weight	32 kg
Rotor	with 8 or 12 bushing of brass
Warranty	1 year
Test certificate	CE

Order data:

Order No.	Type
03.2250	For 8 butyrometers, 230 VAC/50 Hz
03.2251	For 8 butyrometers, 115 VAC/60 Hz
03.2260	For 12 butyrometers, 230 VAC/50 Hz
03.2261	For 12 butyrometers, 115 VAC/60 Hz
03.2270	For 8 babcock bottles, 230 VAC/50 Hz
03.2271	For 8 babcock bottles, 115 VAC/60 Hz

Centrifuge Gerber Universal

Multipurpose centrifuge for the dairy laboratory with 3 pre-programmed speeds for:

- Gerber Butyrometers (350 x g)
 - Solubility index in milk powder (164 x g)
 - Extraction tubes Roese-Gottlieb/Mojonnier (80 x g)
- 1 variable speed range (200-1300 rpm), on request



Specifications:

Control	Microprocessor control
Timer	0 - 255 minutes
Power	115/230 VAC
Frequency	60/50 Hz
Heating (optional)	1200 W adjustable up to 65 °C
Dimensions (WxDxH)	640 x 640 x 450 mm
Weight (without rotor)	47 kg
Universal rotor	without inserts
Special rotor	with inserts
Warranty	1 year
Test certificate	CE

Order data :

Order No.	Type
03.3110-12	230 VAC/50 Hz, without heating and with universal rotor for 12 positions without inserts (order separately)
03.3110-36	230 VAC/50 Hz, without heating and with special rotor incl. 36 sleeves
03.3111-12	115 VAC/60 Hz, without heating and with universal rotor for 12 positions without inserts (order separately)
03.3111-36	115 VAC/60 Hz, without heating and with special rotor incl. 36 sleeves
03.3112-12	230 VAC/50 Hz, with heating and universal rotor for 12 positions without inserts (order separately)
03.3112-36	230 VAC/50 Hz, with heating and special rotor incl. 36 sleeves
03.3113-12	115 VAC/60 Hz, with heating and universal rotor for 12 positions without inserts (order separately)
03.3113-36	115 VAC/60 Hz, with heating and special rotor incl. 36 sleeves

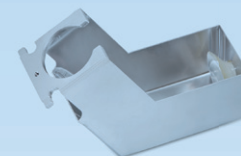
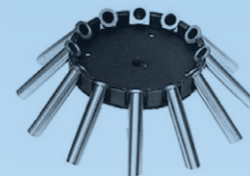
Accessories for centrifuge Gerber Universal

Universal rotor for centrifuge Gerber Universal

Order No.	Type
03.3300	12 places, without inserts (order separately)

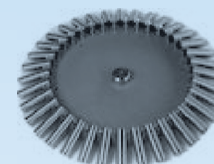
Inserts for Universal rotor (order separately)

Order No.	Type
03.1630	Butyrometer insert Gerber sleeve with ring, made of stainless steel, Ø int. 26 mm, for butyrometers, solubility tubes and Roesse-Gottlieb tubes
03.1631	Insert for ADPI solubility tubes made of stainless steel, Ø int. 31 mm, for solubility tubes according to ADPI
03.1632	Mojonnier insert insert with holder made of aluminum, for Mojonnier tubes
03.1633	Babcock insert made of stainless steel, Ø int. 38 mm, for babcock bottles



Special rotor for centrifuge Gerber Universal

Order No.	Type
03.3340	Complete with 36 swing out places, made of stainless steel, for Gerber butyrometers and solubility tubes according to Gerber
03.3341	Sleeve for special rotor, made of stainless steel, Ø int. 26 mm



Gerber Instruments AG

Im Langhag 12
CH-8307 Effretikon

Tel.: +41 (0)52/343 37 37

Fax: +41 (0)52/343 30 70

www.gerber-instruments.com

info@gerber-instruments.ch